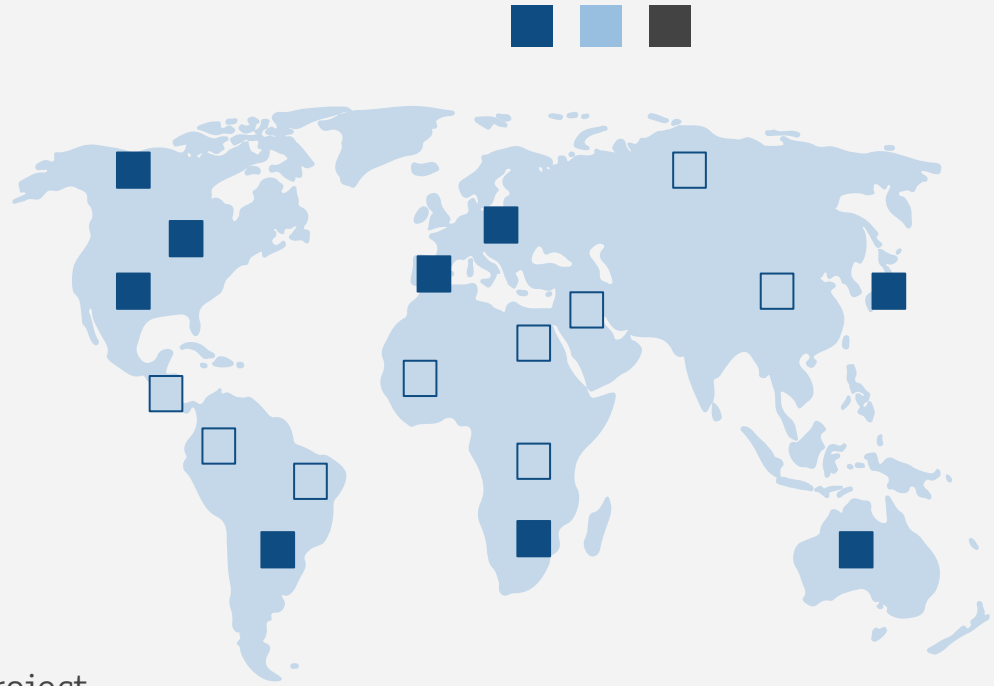


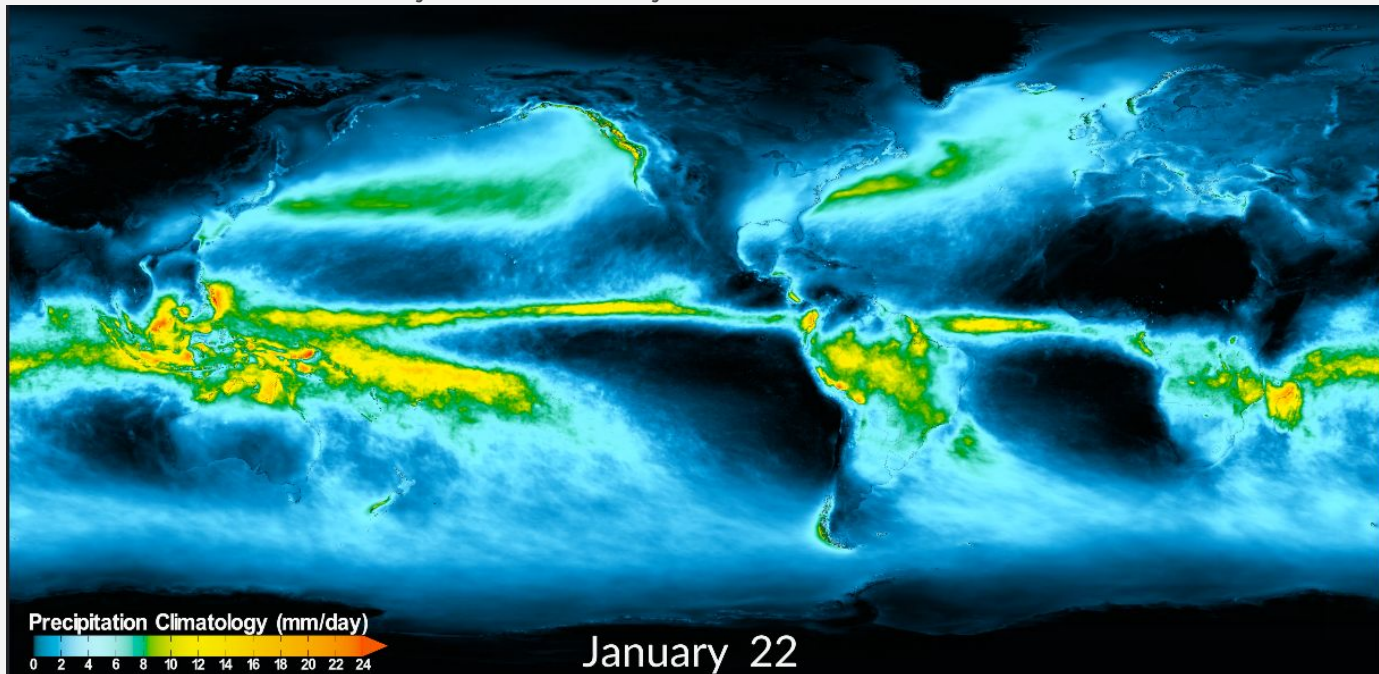
# INVESTIGATING PRECIPITATION CLIMATOLOGY OVER AFRICA

GPM mentorship program 2024 capstone project  
by **Faith Hunja**  
Mentors: **Dr. Jackson Tan, Dr. George Huffman**



# PROBLEM

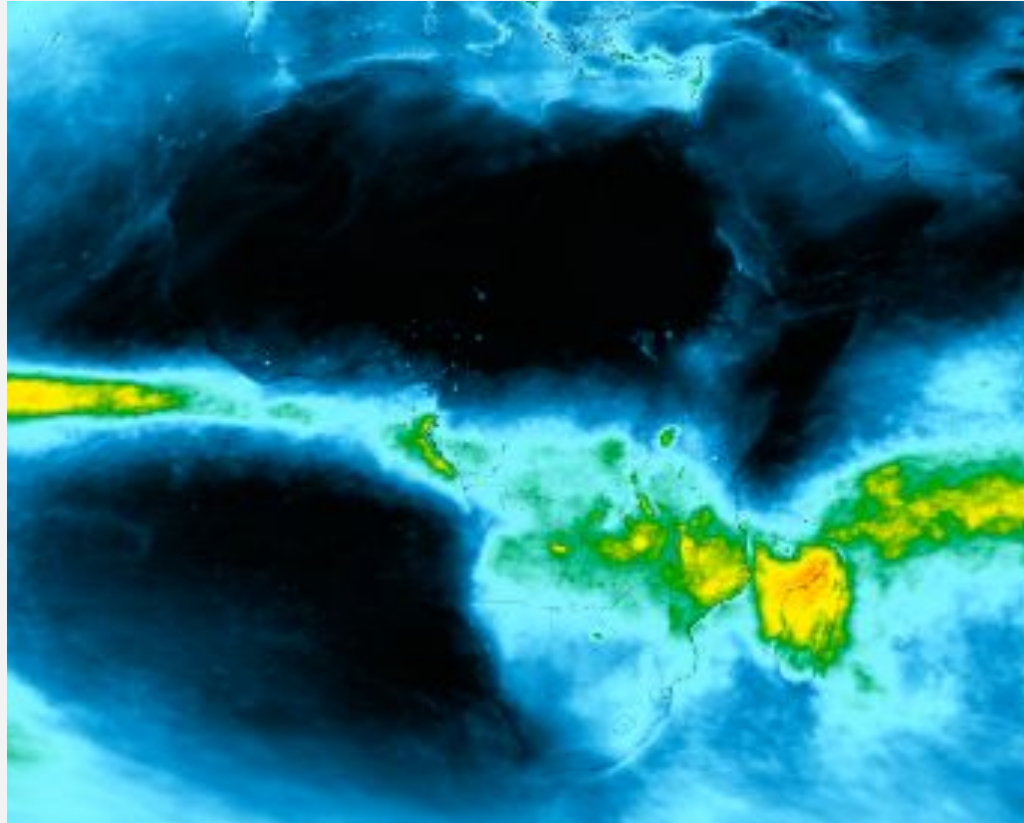
- IMERG climatology shows spots of high precipitation values which we suspect correspond to inland water bodies and may not be entirely real



IMERG 30 day moving average Precipitation Climatology (2001 - 2022)

Source: <https://svs.gsfc.nasa.gov/5254/>

# PROBLEM



Zoomed in image of Africa

# OBJECTIVES

## STEPS:

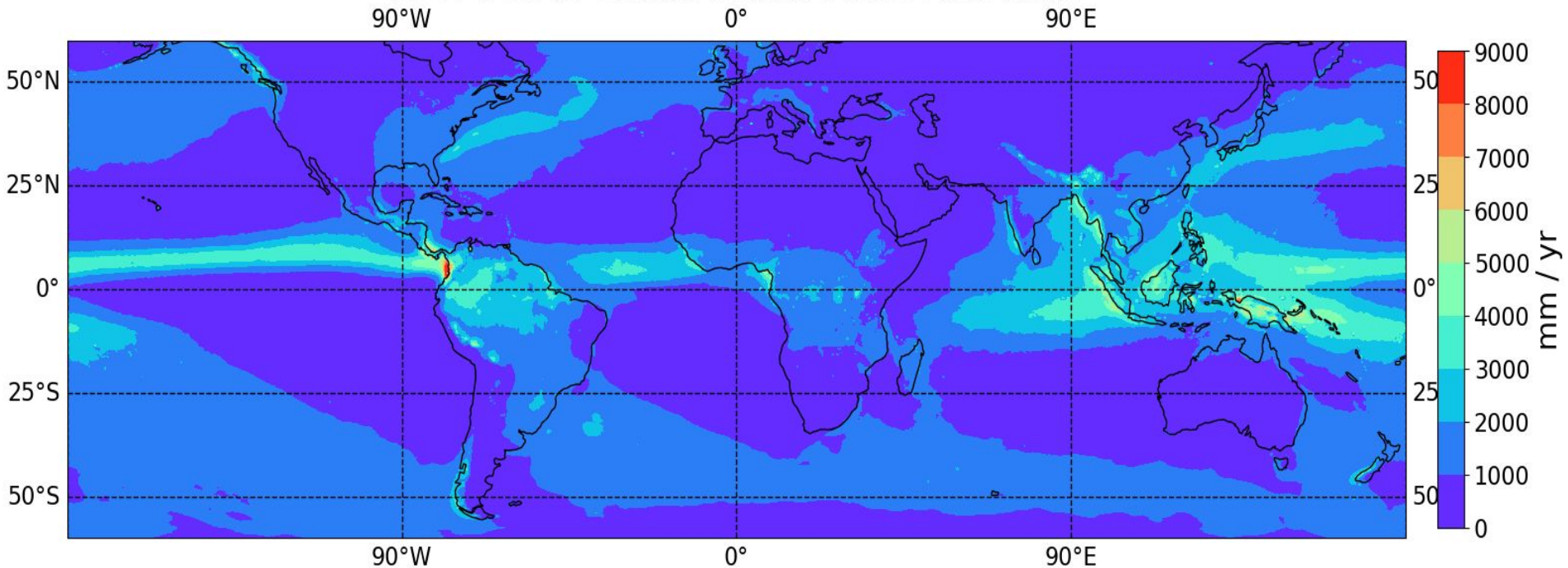
- Compute and plot global grand climatology (IMERG grand climatology netCDF files, 06/2000-05/2023, Final run, V07B)
- Compute and plot monthly climatology - focussing on Africa (IMERG monthly climatology netCDF files, 2001-2022, Final run, V07B)
- Compare high precipitation values with physical features on a map
- Compute and plot GMI monthly climatology (WORK IN PROGRESS!)

## COMPUTATION (using Python):

- Xarray -> open and read dataset
- Numpy -> handling the variables
- Matplotlib and cartopy -> plotting and visualization

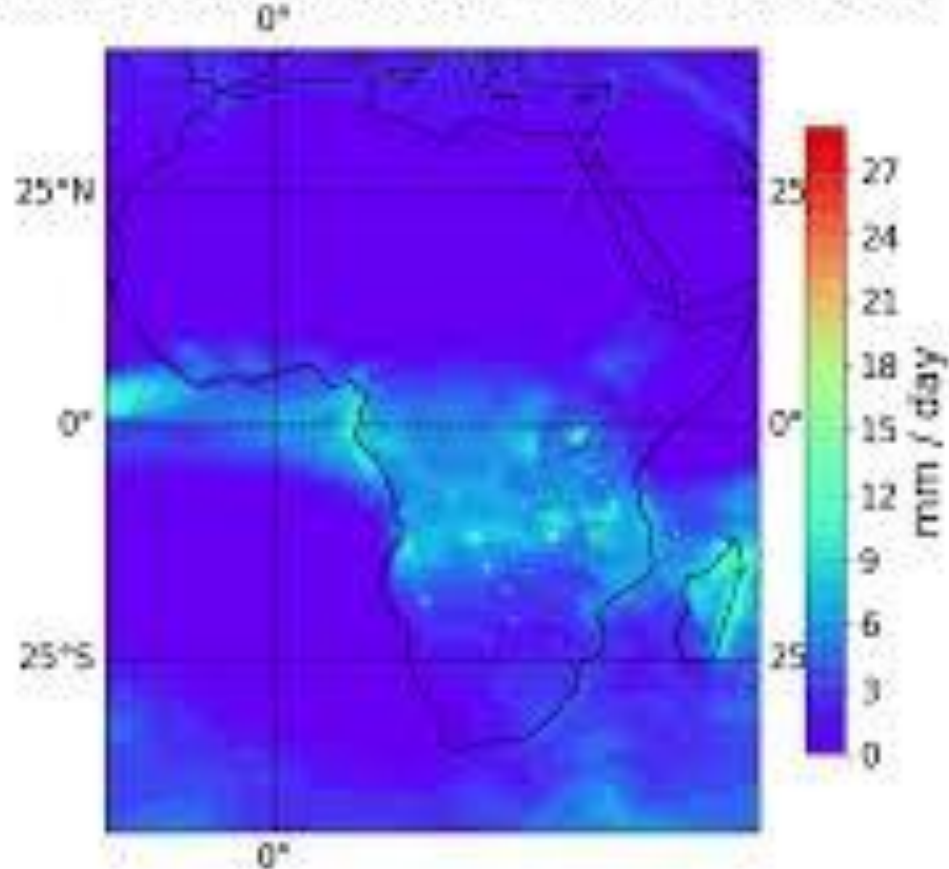
# IMERG GLOBAL GRAND CLIMATOLOGY

## GPM IMERG Global Grand Mean Rain Rate



# IMERG AFRICA MONTHLY CLIMATOLOGY

GPM IMERG Global March Mean Rain Rate



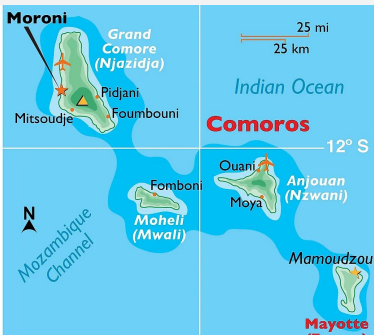
Video animation of IMERG monthly climatology change over Africa. Link: <https://youtu.be/3iWKHtUV7tg>

# JANUARY ANALYSIS



Gulf of Guinea

Source:  
[https://en.wikipedia.org/wiki/Gulf\\_of\\_Guinea](https://en.wikipedia.org/wiki/Gulf_of_Guinea)



Comoros and Mayotte islands

Source:  
<https://www.worldatlas.com/maps/comoros>



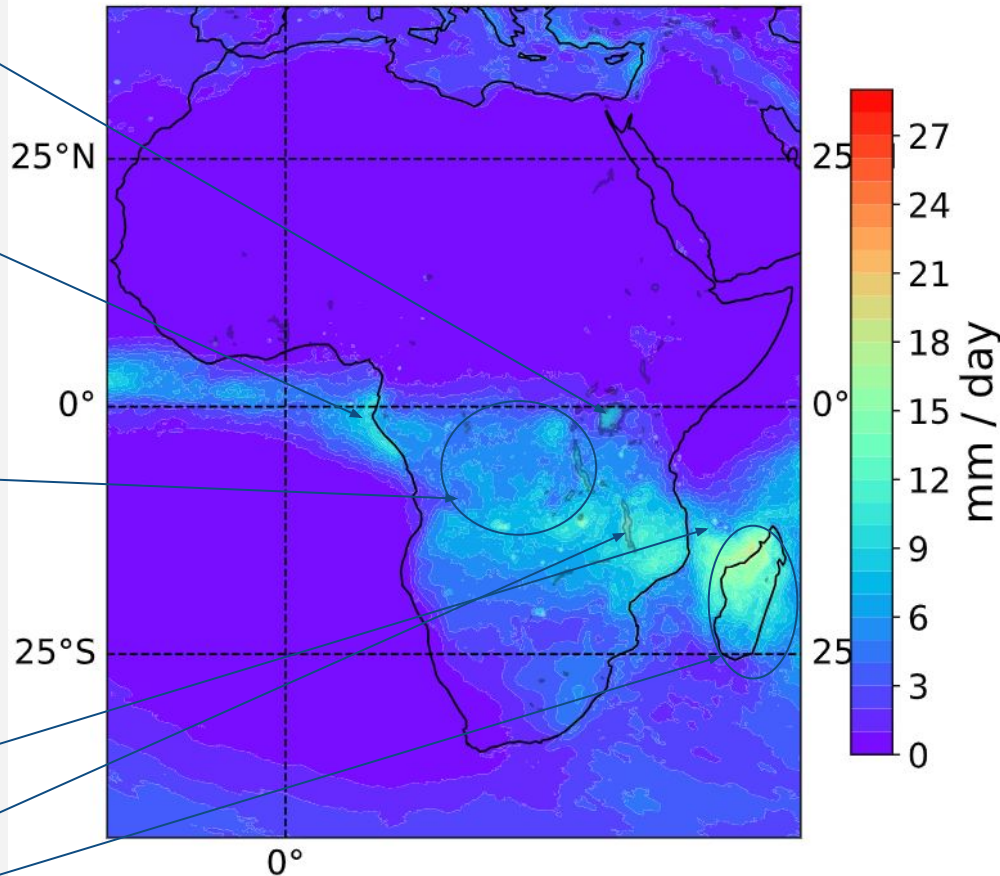
Congo river basin

Source:  
<https://www.worldatlas.com/maps/democratic-republic-of-the-congo>

Lake Victoria

Lake Malawi

Madagascar island



# JULY ANALYSIS



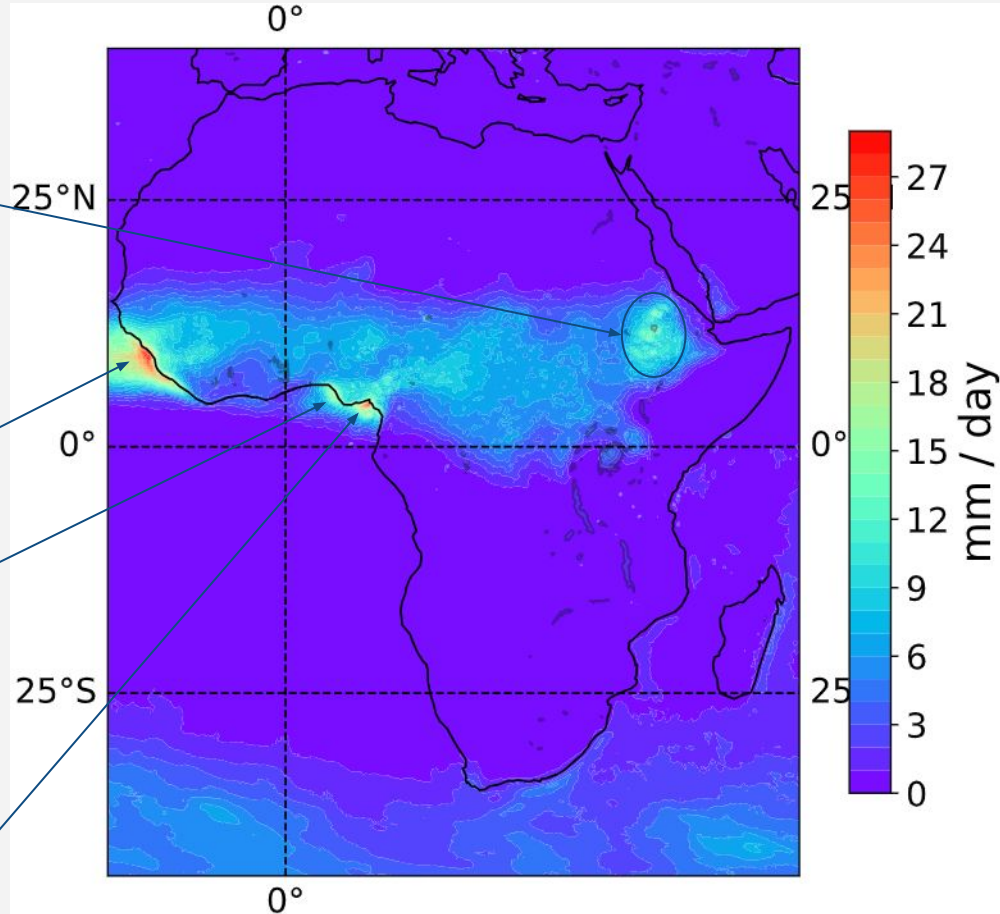
Ethiopian highlands

Source: <https://www.worldatlas.com/maps/ethiopia>



Bissagos archipelago: 88 islands

Source: <https://www.worldatlas.com/maps/guinea-bissau>



River Niger delta

Bakassi peninsula, Bioko island



# OBSERVATIONS AND CONCLUSION

- Most precipitation “hotspots” represent islands, inland lakes and some major river deltas
- Not all lakes have hotspots
- Not all hotspots correspond to lakes or other geographical features
- Further analysis of GMI is required for clarification